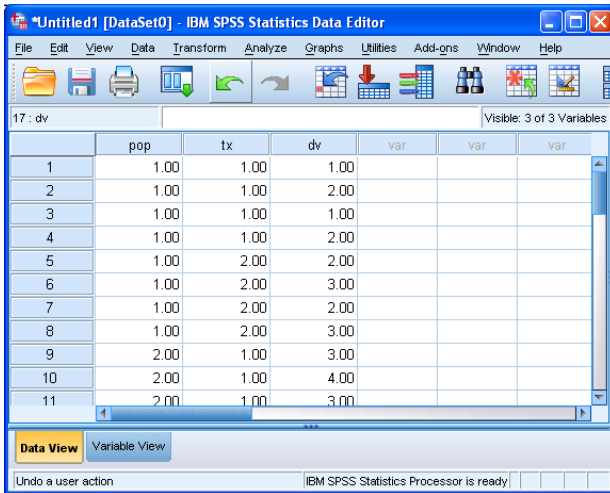


Bar Graphs to go with 2x2 Between Groups ANOVA

Analyze → Graphs → Legacy Dialogs → Bar



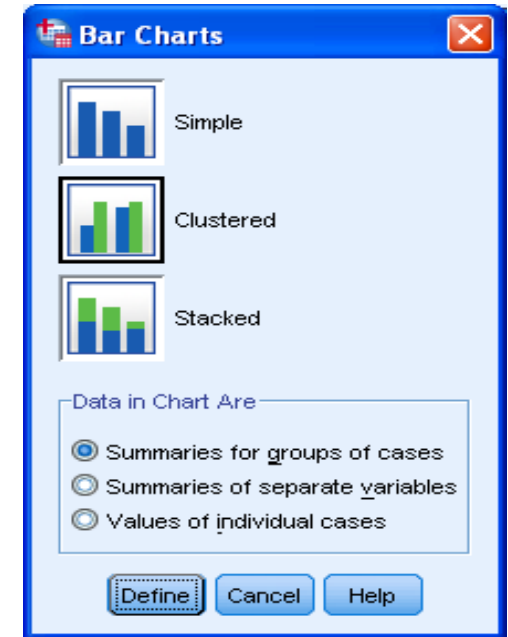
	pop	tx	dv	var	var	var
1	1.00	1.00	1.00			
2	1.00	1.00	2.00			
3	1.00	1.00	1.00			
4	1.00	1.00	2.00			
5	1.00	2.00	2.00			
6	1.00	2.00	3.00			
7	1.00	2.00	2.00			
8	1.00	2.00	3.00			
9	2.00	1.00	3.00			
10	2.00	1.00	4.00			
11	2.00	1.00	3.00			

As for the 2x2 BG ANOVA...

- One variable (pop) holds the group membership for 1st IV
- One variable (tx) holds the group membership for the 2nd IV
- One variable (dv) holds the DV

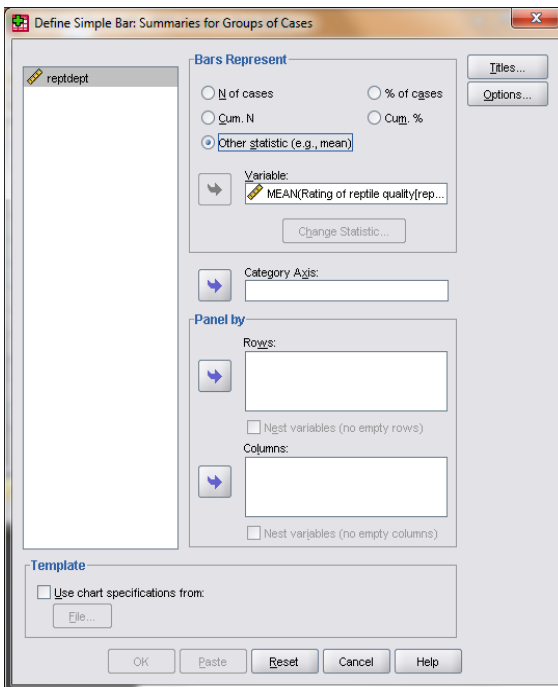
#1 Select type of chart →

- Click on “Clustered” icon
- Click the “Summaries for groups of Cases” radio button
- Click “Define”



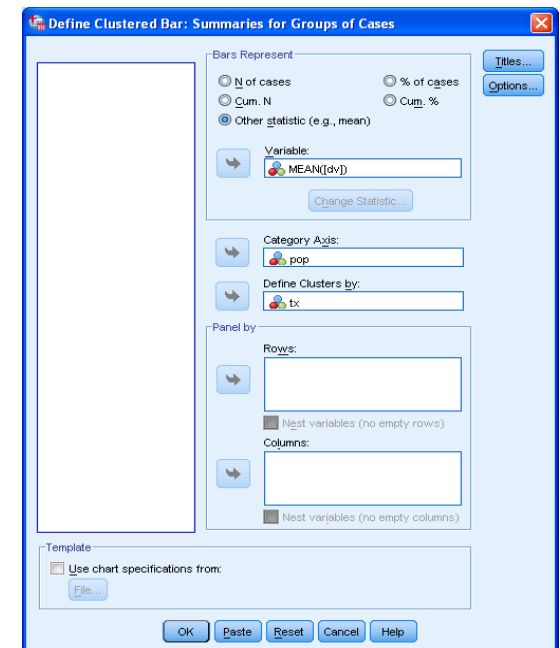
← #2 Select the DV

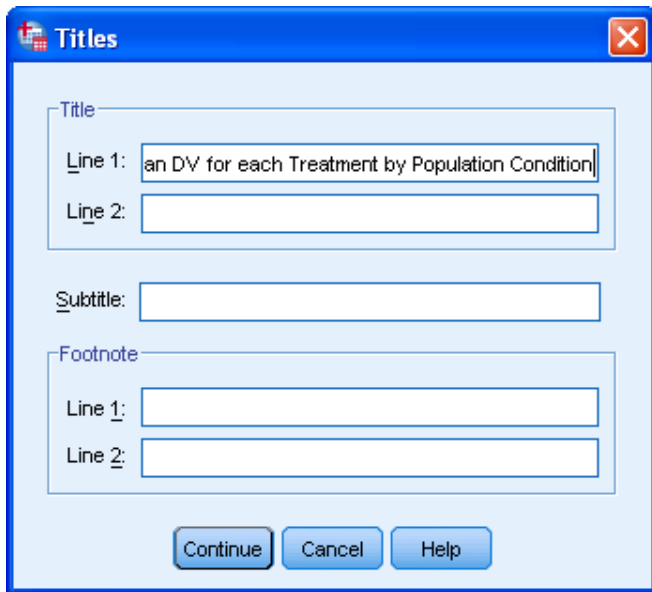
- Highlight quantitative DV (dv)
- Click the “Other Statistic (e.g., mean)” radio button
- Click the arrow to move the DV into the “Variable” window



#3 Select the IVs →

- Click the categorical IV that you want the bars together (tx)
- Click the arrow to move that IV into the “Category Axis” window
- Click the categorical IV that you want to separate the bar groups (pop)
- Click the arrow to move that IV into the “Define Clusters by” window



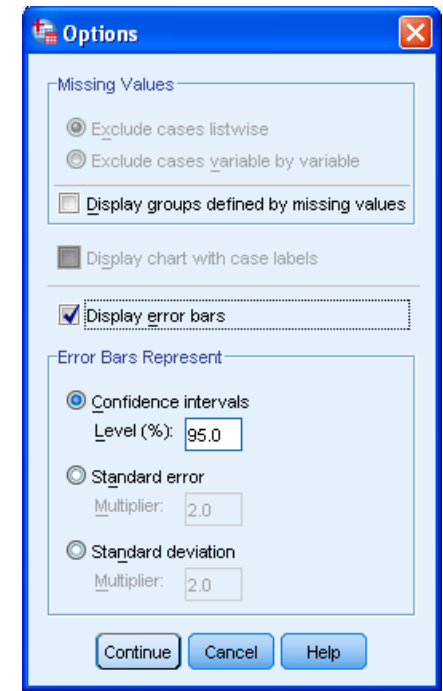


← #4 Write the Title

- Click on “Titles”
- Type titles, subtitles & footnotes as desired
- Click “Continue”

#5 Select the Whiskers →

- Click Options
- Check “Display error bars”
- Check “Standard Error”
- Click Continue



#6 Using the graph

Right-click the graph in the SPSS output window and select “Copy” to put the graph into a Word or other file.

