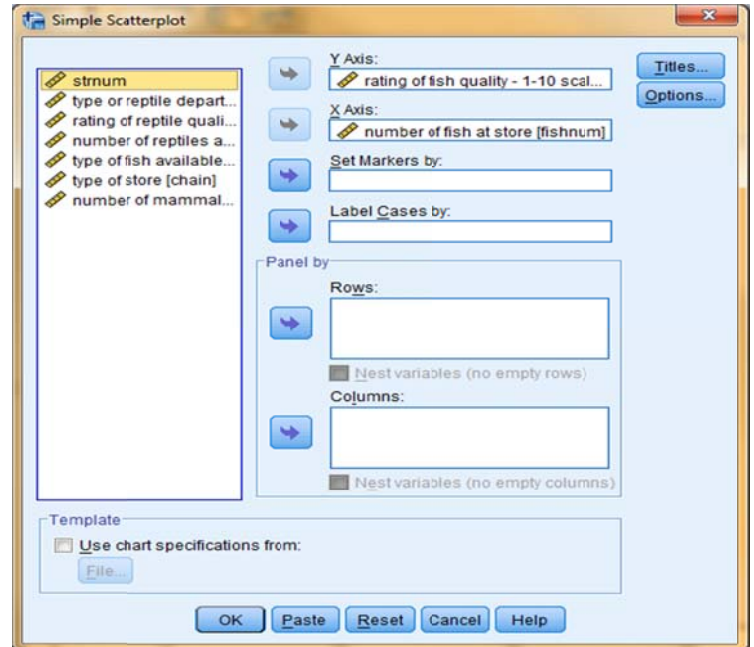
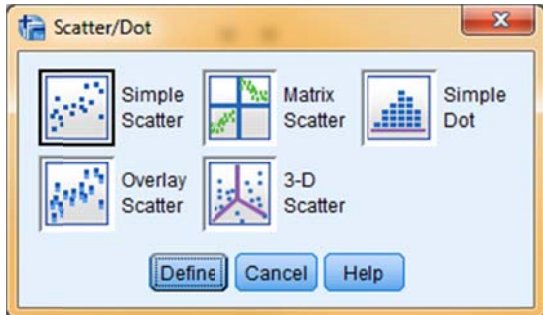


SPSS: Scatterplot

Application: To examine the bivariate plot of two variables – usually to determine if there is a linear relationship before running a Pearson's correlation.

Graph → Legacy Dialogs → Scatter/Dot

- Highlight "Simple Scatter" and click "Define"
- Highlight the criterion variable and use the arrow to move into the "Y Axis" window
- Highlight the predictor variable and use the arrow to move into the "X Axis" window

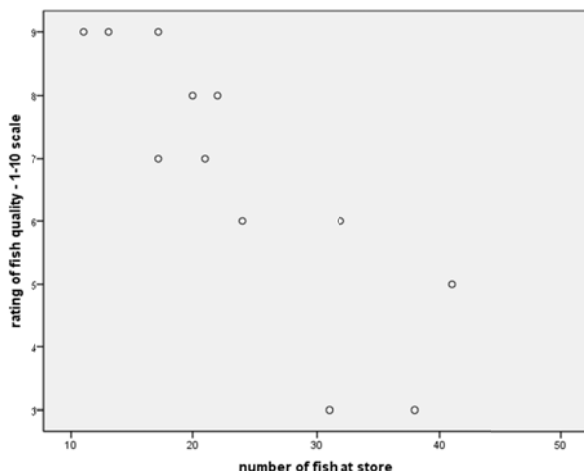


SPSS Syntax

GRAPH

/SCATTERPLOT(BIVAR)=fishnum WITH fishgood.

← predictor (x-axis) WITH criterion (y-axis)



Inspection of the graph suggests that there is a generally linear trend to the data, with no obvious curvilinearity.

So, we would be comfortable analyzing these data using a Pearson's correlation.